

BASE FLOOR PLAN

Western Washington University (WWU) makes these documents available on an "as is" basis. All warranties and representations of any kind with regard to said documents are disclaimed, including the implied warranties of merchantability and fitness for a particular use. WWU does not warrant the documents against deficiencies of any kind.



RIDGEWAY SIGMA
FLOOR 1

Last Drawing Revision: 02/28/2017

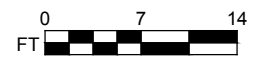
Last Sync With AIM: 02/09/2017

Building	RS
Floor #	01



BASE FLOOR PLAN

Western Washington University (WWU) makes these documents available on an "as is" basis. All warranties and representations of any kind with regard to said documents are disclaimed, including the implied warranties of merchantability and fitness for a particular use. WWU does not warrant the documents against deficiencies of any kind.

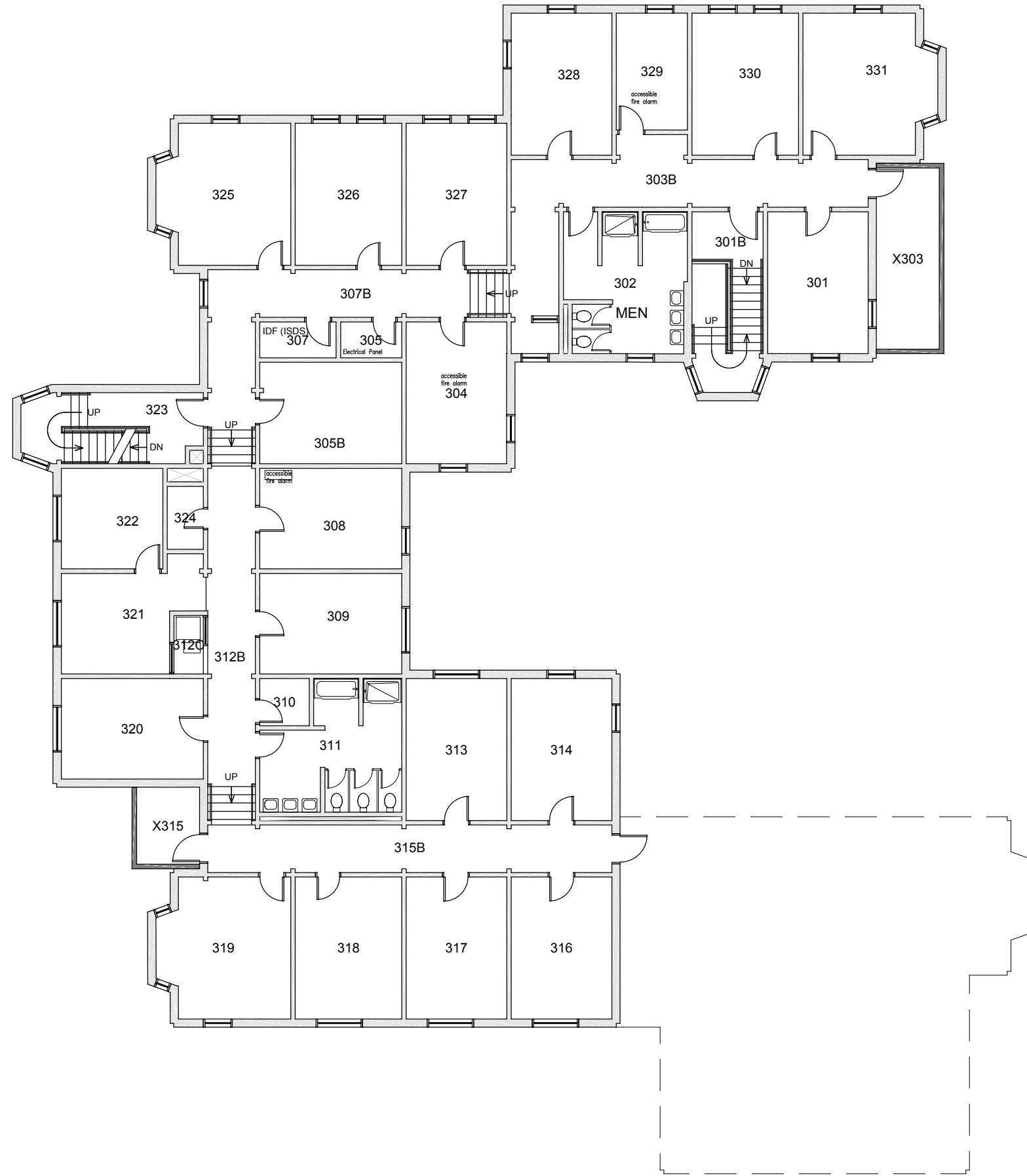


RIDGEWAY SIGMA
FLOOR 2

Last Drawing Revision: 02/28/2017

Last Sync With AIM: 02/09/2017

Building	RS
Floor #	02



BASE FLOOR PLAN

Western Washington University (WWU) makes these documents available on an "as is" basis. All warranties and representations of any kind with regard to said documents are disclaimed, including the implied warranties of merchantability and fitness for a particular use. WWU does not warrant the documents against deficiencies of any kind.

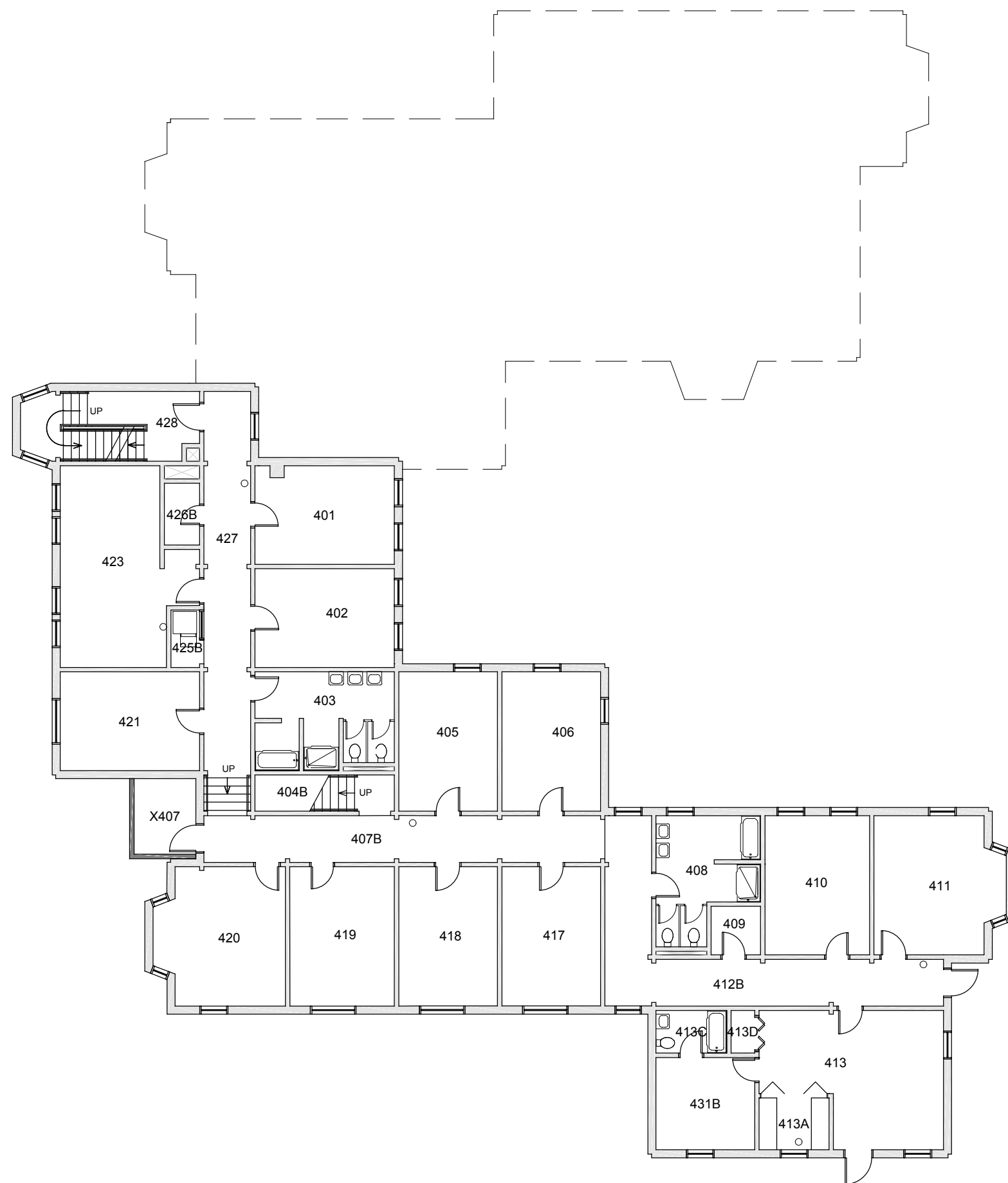


RIDGEWAY SIGMA
FLOOR 3

Last Drawing Revision: 02/28/2017

Last Sync With AIM: 02/09/2017

Building	RS
Floor #	03



BASE FLOOR PLAN

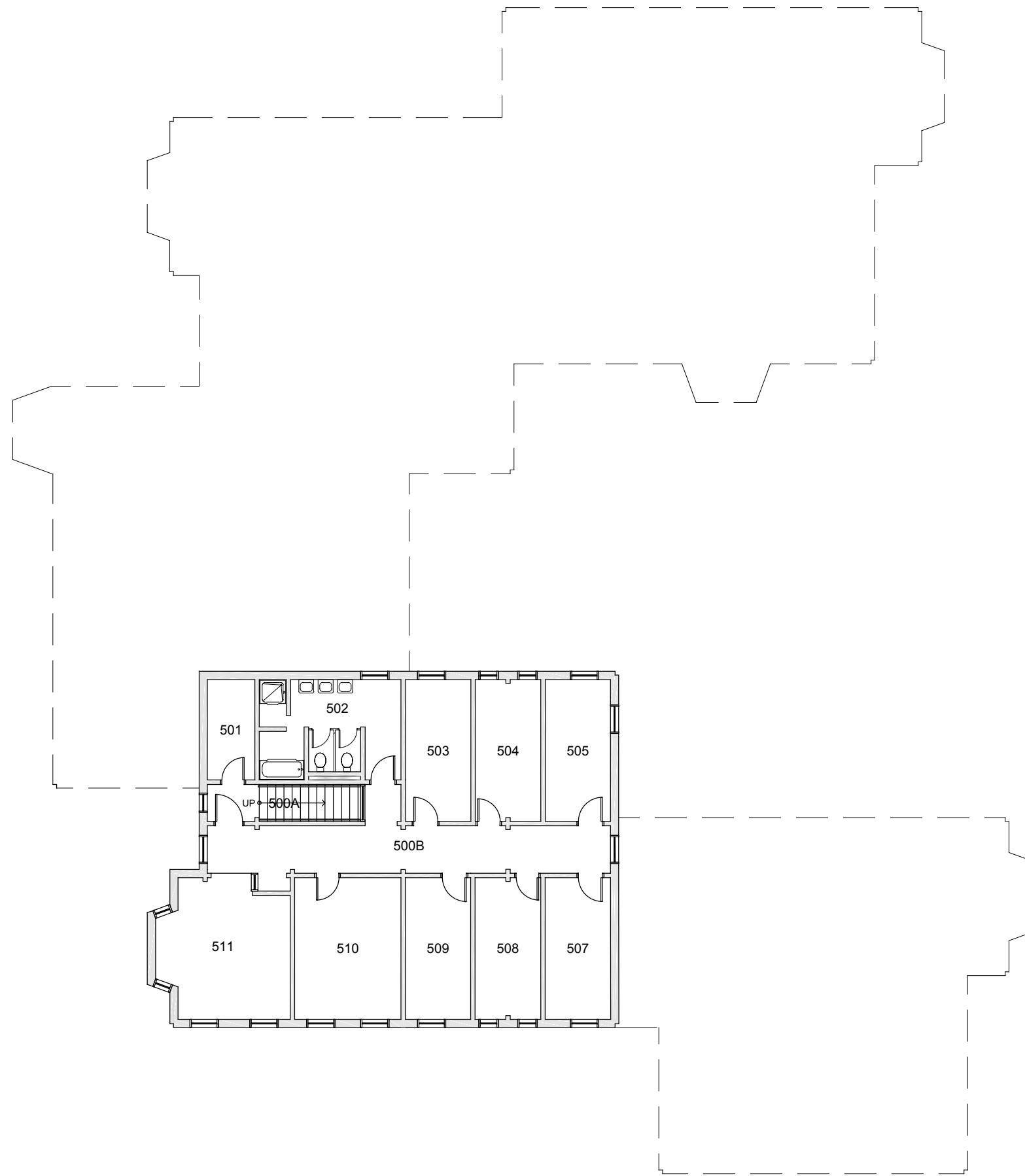
Western Washington University (WWU) makes these documents available on an "as is" basis. All warranties and representations of any kind with regard to said documents are disclaimed, including the implied warranties of merchantability and fitness for a particular use. WWU does not warrant the documents against deficiencies of any kind.



RIDGEWAY SIGMA
FLOOR 4

Last Drawing Revision: 02/28/2017 Last Sync With AIM: 02/09/2017

Building	RS
Floor #	04



BASE FLOOR PLAN

Western Washington University (WWU) makes these documents available on an "as is" basis. All warranties and representations of any kind with regard to said documents are disclaimed, including the implied warranties of merchantability and fitness for a particular use. WWU does not warrant the documents against deficiencies of any kind.



Last Drawing Revision: 02/28/2017

RIDGEWAY SIGMA
FLOOR 5

Last Sync With AIM: 02/09/2017

Building	RS
Floor #	05