

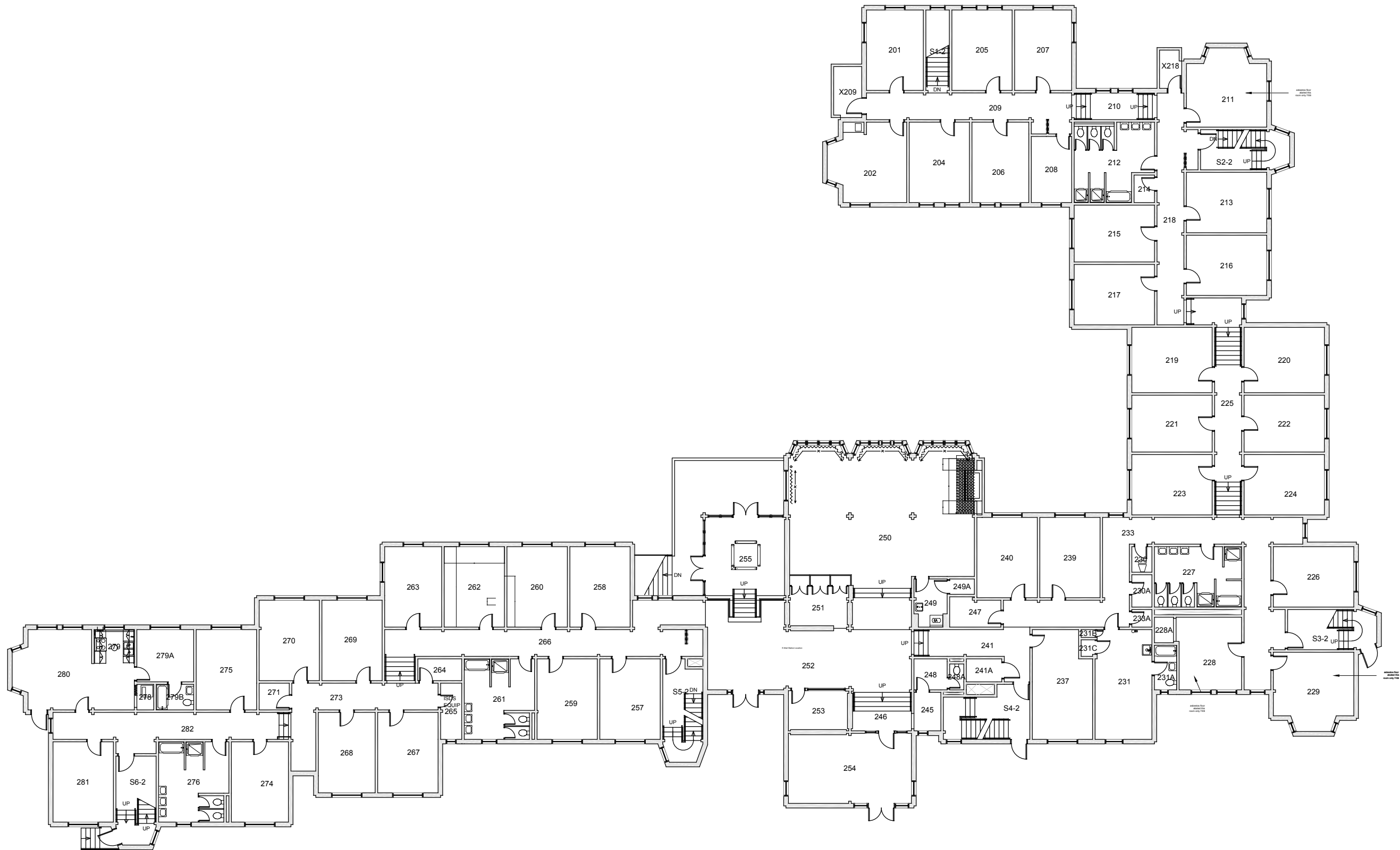
BASE FLOOR PLAN

Western Washington University (WWU) makes these documents available on an "as is" basis. All warranties and representations of any kind with regard to said documents are disclaimed, including the implied warranties of merchantability and fitness for a particular use. WWU does not warrant the documents against deficiencies of any kind.



RIDGEWAY KAPPA	
FLOOR 1	
Last Drawing Revision: 03/02/2017	Last Sync With AIM: 02/09/2017

Building RK
Floor # 01



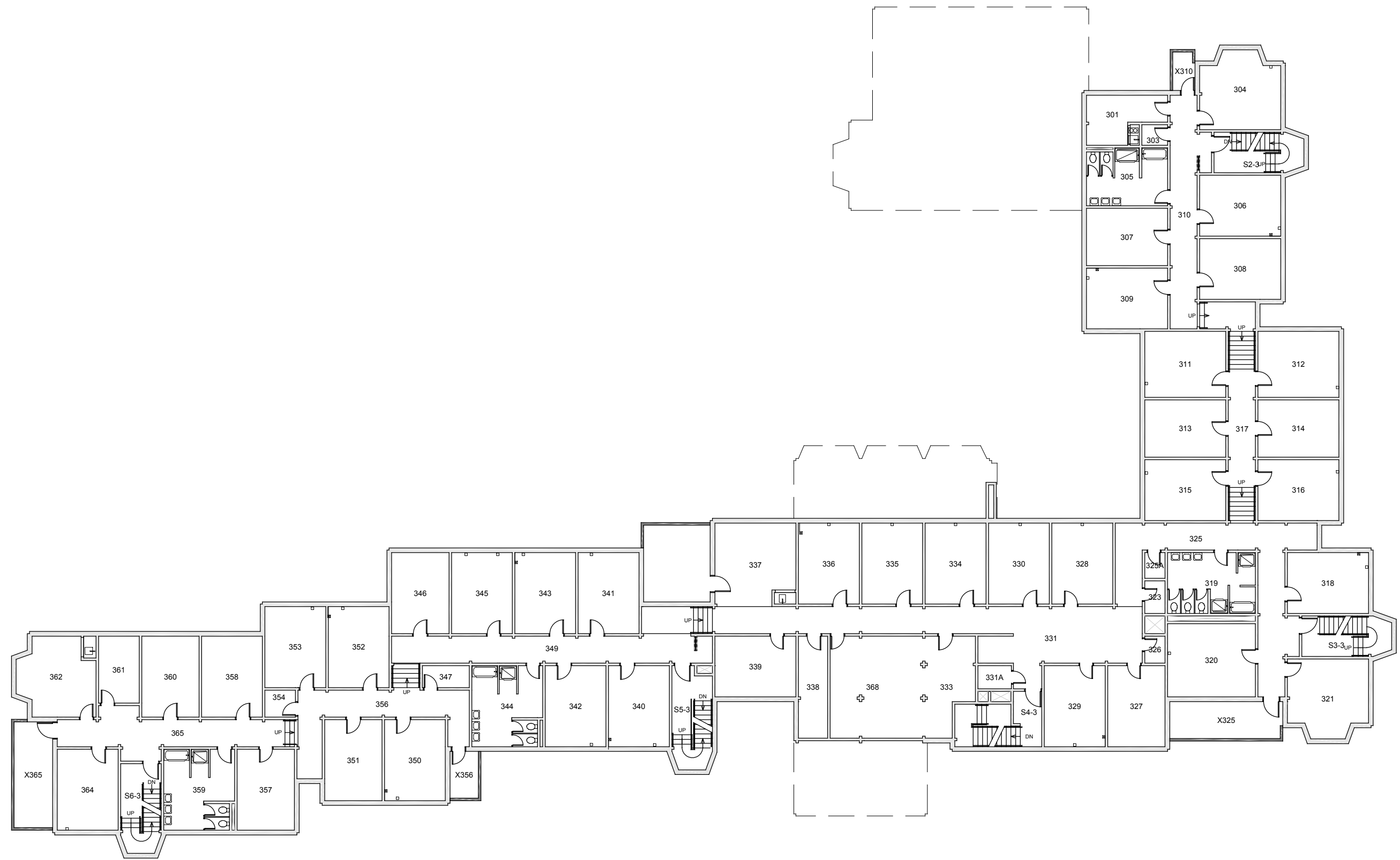
BASE FLOOR PLAN

Western Washington University (WWU) makes these documents available on an "as is" basis. All warranties and representations of any kind with regard to said documents are disclaimed, including the implied warranties of merchantability and fitness for a particular use. WWU does not warrant the documents against deficiencies of any kind.



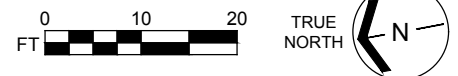
<h2 style="margin: 0;">RIDGEWAY KAPPA</h2> <p style="margin: 0;">FLOOR 2</p>	<p style="font-size: small;">Last Drawing Revision: 03/02/2017</p> <p style="font-size: small;">Last Sync With AIM: 02/09/2017</p>
--	--

<p style="font-size: x-small;">Building</p> <h1 style="margin: 0;">RK</h1>
<p style="font-size: x-small;">Floor #</p> <h1 style="margin: 0;">02</h1>



BASE FLOOR PLAN

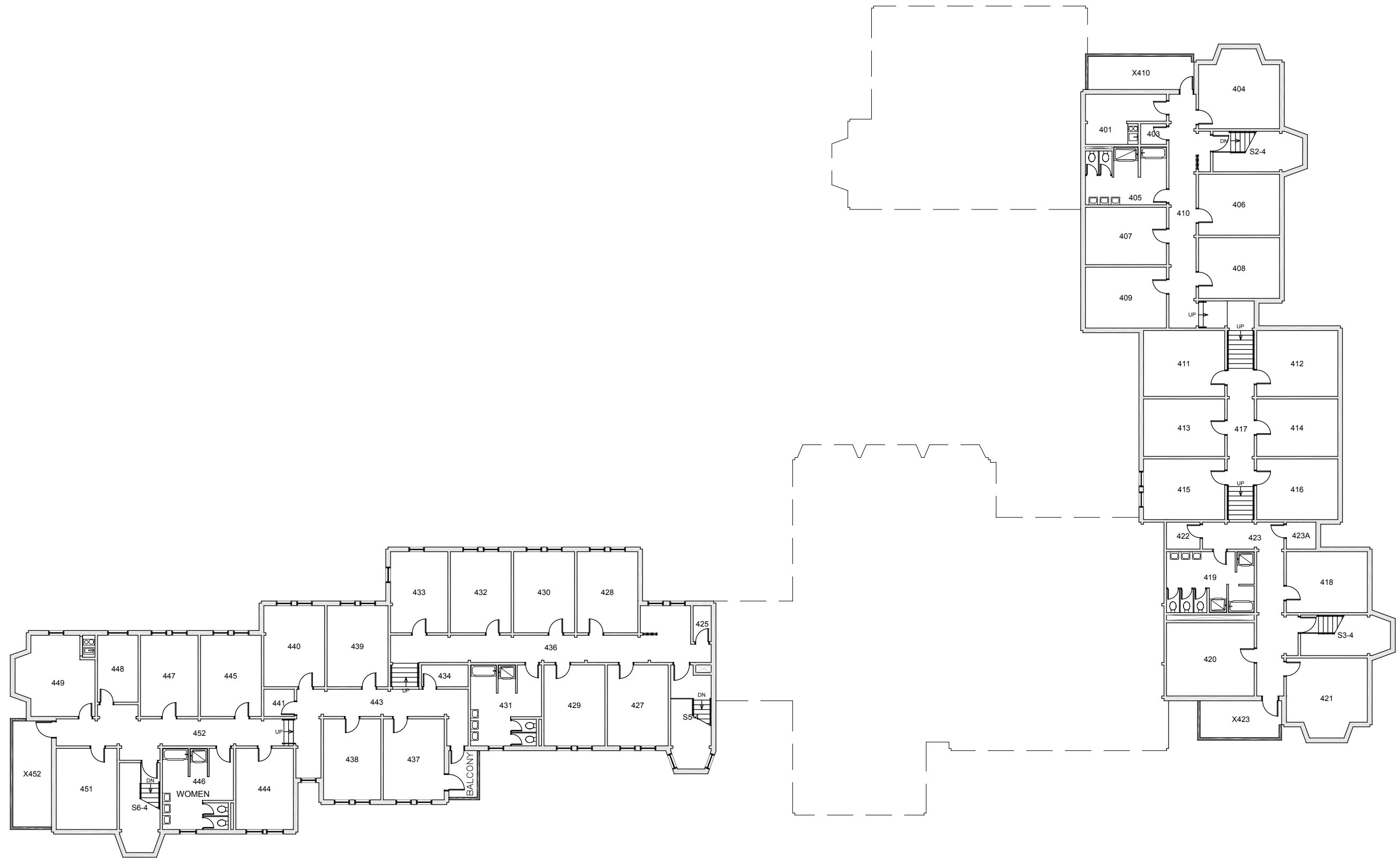
Western Washington University (WWU) makes these documents available on an "as is" basis. All warranties and representations of any kind with regard to said documents are disclaimed, including the implied warranties of merchantability and fitness for a particular use. WWU does not warrant the documents against deficiencies of any kind.



RIDGEWAY KAPPA
FLOOR 3

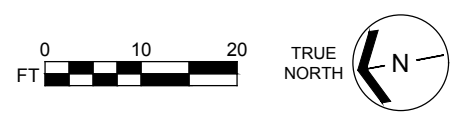
Last Drawing Revision: 03/02/2017 Last Sync With AIM: 02/09/2017

Building	RK
Floor #	03



BASE FLOOR PLAN

Western Washington University (WWU) makes these documents available on an "as is" basis. All warranties and representations of any kind with regard to said documents are disclaimed, including the implied warranties of merchantability and fitness for a particular use. WWU does not warrant the documents against deficiencies of any kind.



RIDGEWAY KAPPA
FLOOR 4

Last Drawing Revision: 03/02/2017 Last Sync With AIM: 02/09/2017

Building RK
Floor # 04