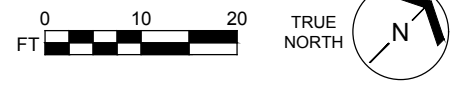


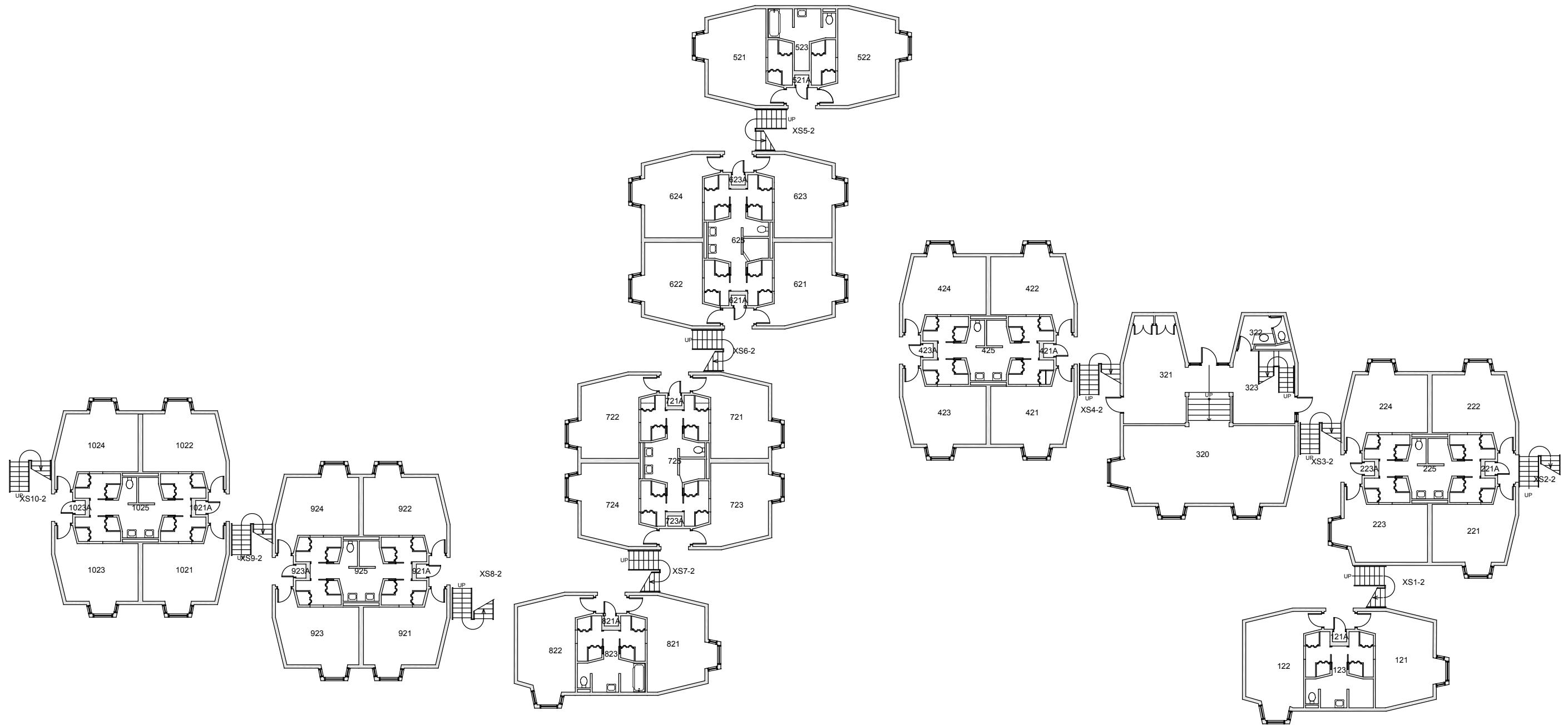
BASE FLOOR PLAN

Western Washington University (WWU) makes these documents available on an "as is" basis. All warranties and representations of any kind with regard to said documents are disclaimed, including the implied warranties of merchantability and fitness for a particular use. WWU does not warrant the documents against deficiencies of any kind.



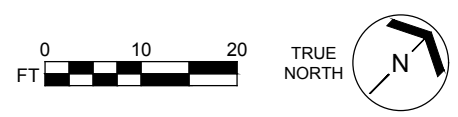
RIDGEWAY GAMMA		Building RG
FLOOR 1		
Last Drawing Revision: 02/27/2017		Last Sync With AIM: 02/09/2017

Floor # 01



BASE FLOOR PLAN

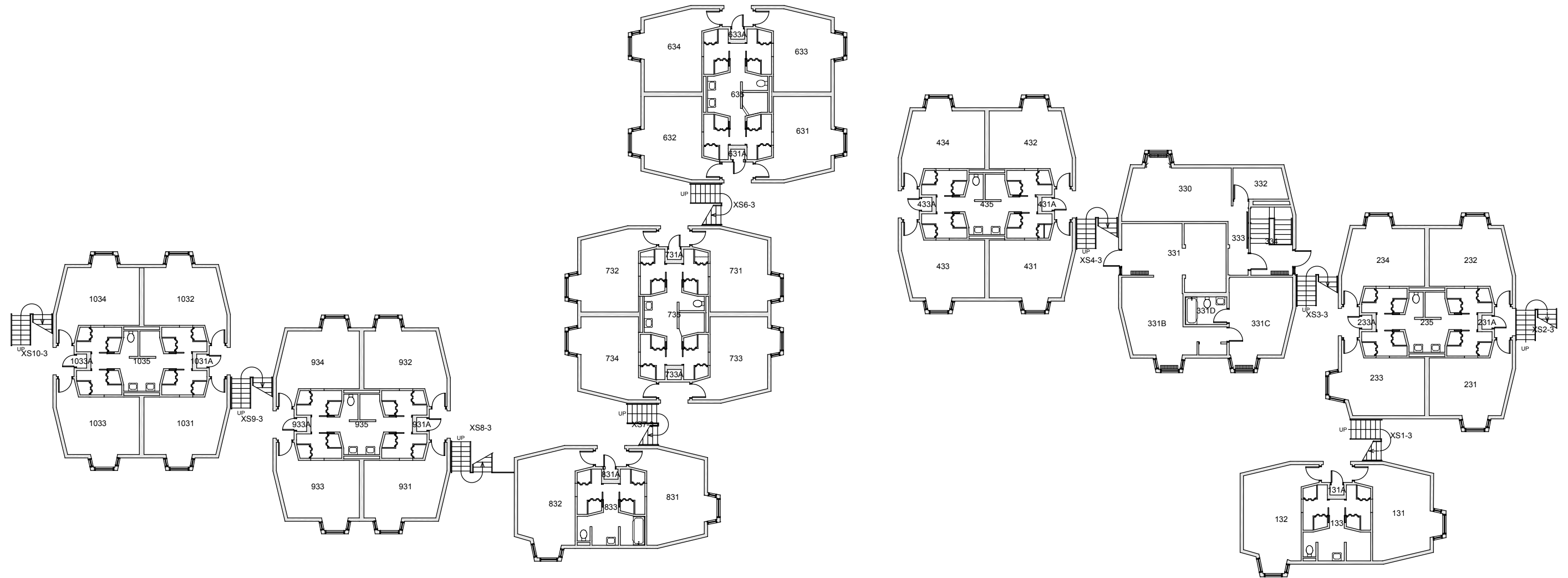
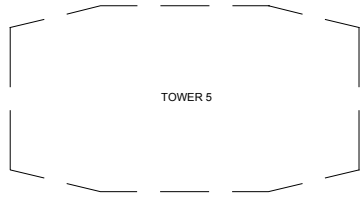
Western Washington University (WWU) makes these documents available on an "as is" basis. All warranties and representations of any kind with regard to said documents are disclaimed, including the implied warranties of merchantability and fitness for a particular use. WWU does not warrant the documents against deficiencies of any kind.



RIDGEWAY GAMMA
FLOOR 2

Last Drawing Revision: 02/27/2017 Last Sync With AIM: 02/09/2017

Building	RG
Floor #	02



BASE FLOOR PLAN

Western Washington University (WWU) makes these documents available on an "as is" basis. All warranties and representations of any kind with regard to said documents are disclaimed, including the implied warranties of merchantability and fitness for a particular use. WWU does not warrant the documents against deficiencies of any kind.



TRUE NORTH

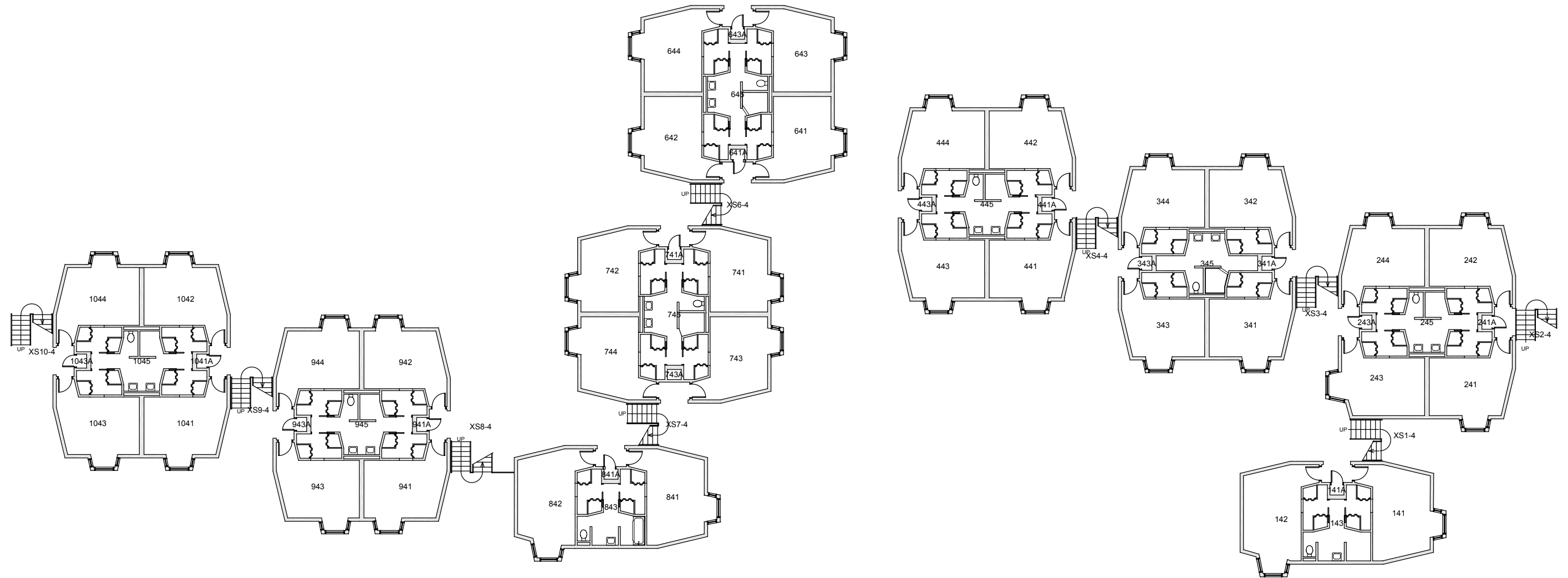
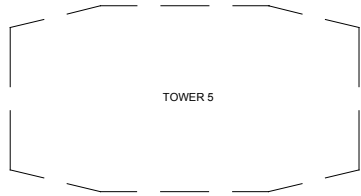


RIDGEWAY GAMMA
FLOOR 3

Last Drawing Revision: 02/27/2017

Last Sync With AIM: 02/09/2017

Building	RG
Floor #	03



BASE FLOOR PLAN

Western Washington University (WWU) makes these documents available on an "as is" basis. All warranties and representations of any kind with regard to said documents are disclaimed, including the implied warranties of merchantability and fitness for a particular use. WWU does not warrant the documents against deficiencies of any kind.



TRUE NORTH



RIDGEWAY GAMMA
FLOOR 4

Last Drawing Revision: 02/27/2017

Last Sync With AIM: 02/10/2017

Building	RG
Floor #	04