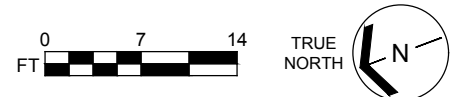


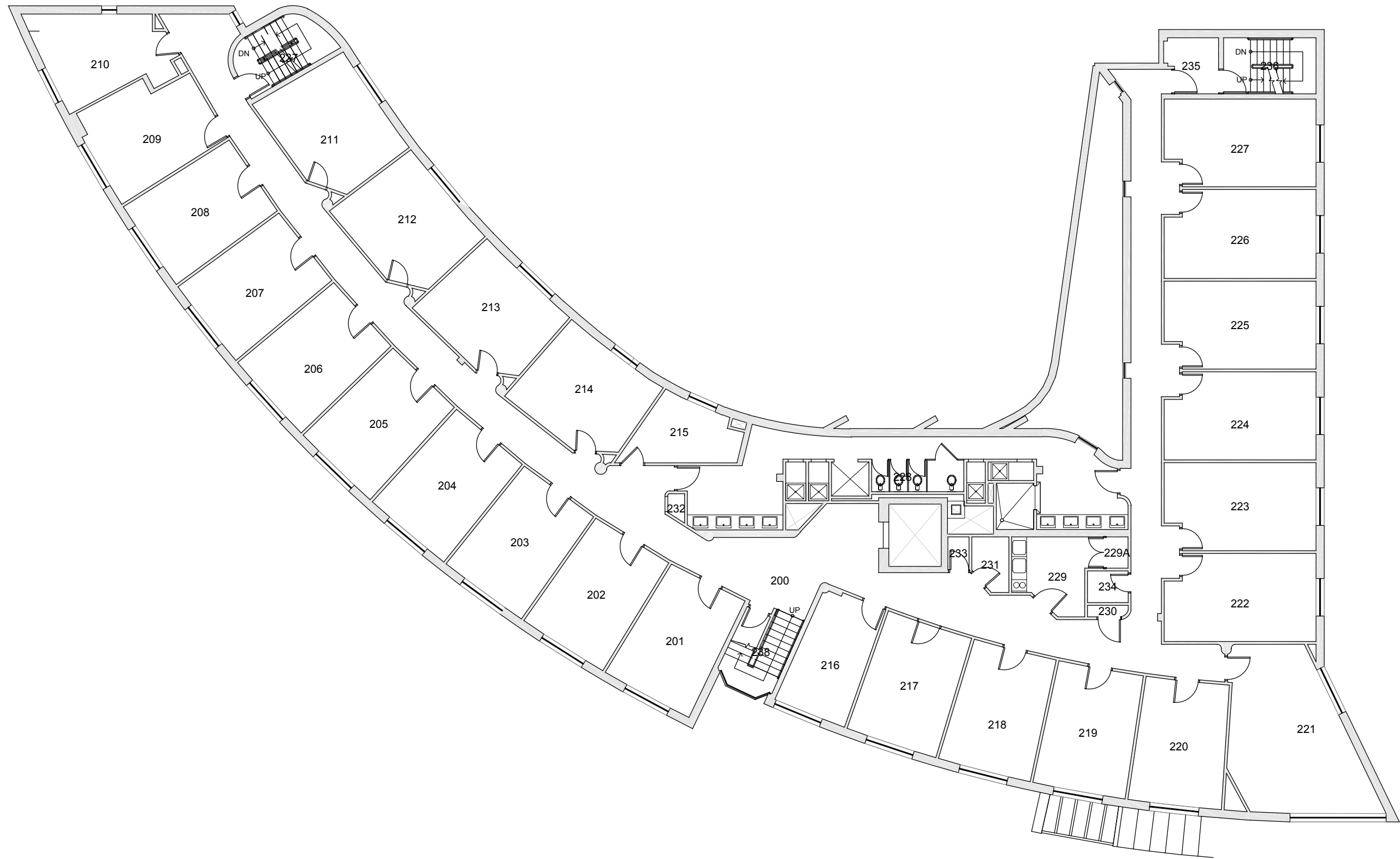
BASE FLOOR PLAN

Western Washington University (WWU) makes these documents available on an "as is" basis. All warranties and representations of any kind with regard to said documents are disclaimed, including the implied warranties of merchantability and fitness for a particular use. WWU does not warrant the documents against deficiencies of any kind.



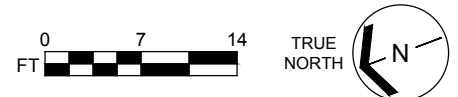
NASH HALL	
FLOOR 1	
Last Drawing Revision: 02/27/2017	Last Sync With AIM: 02/09/2017

Building	NA
Floor #	01



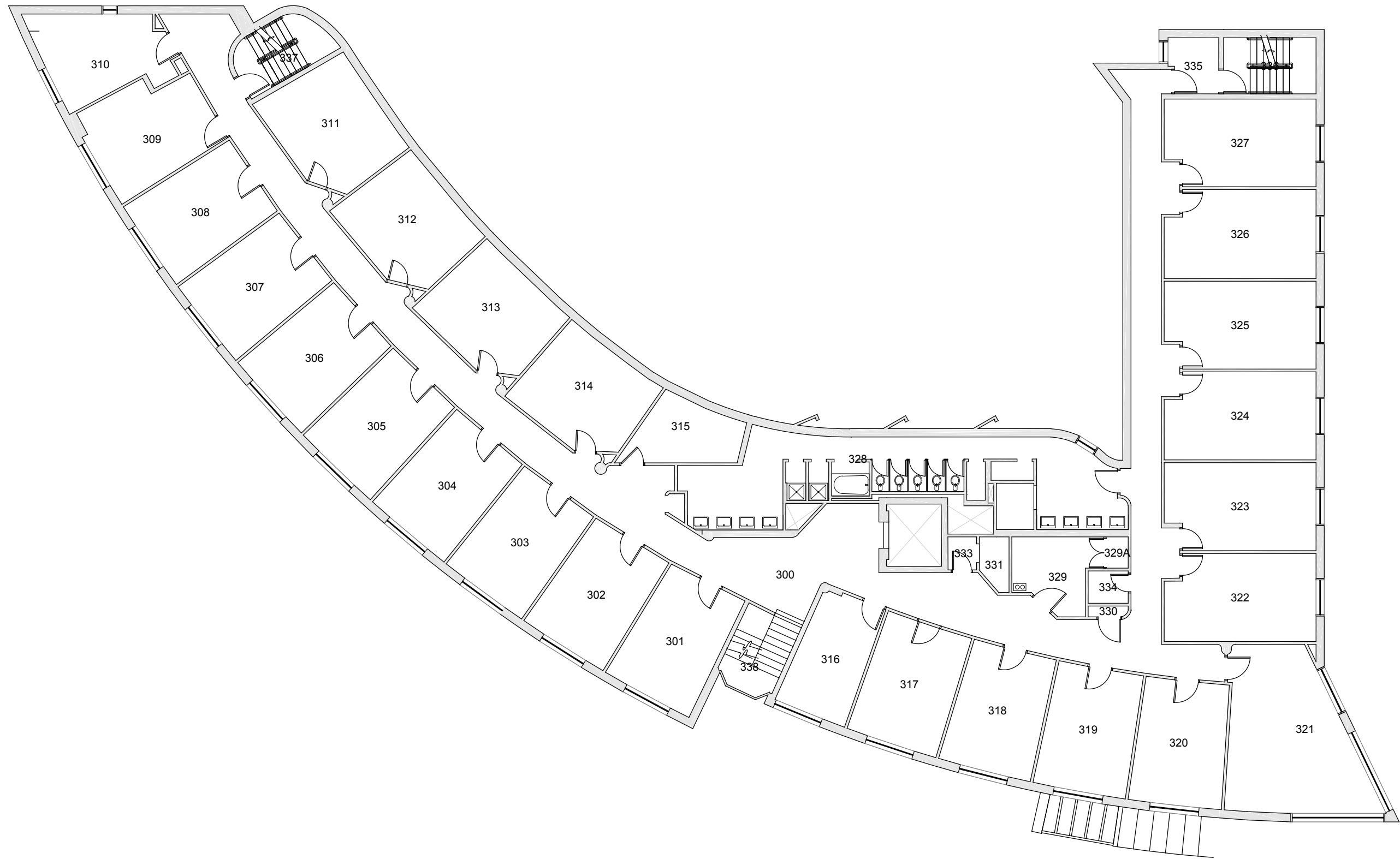
BASE FLOOR PLAN

Western Washington University (WWU) makes these documents available on an "as is" basis. All warranties and representations of any kind with regard to said documents are disclaimed, including the implied warranties of merchantability and fitness for a particular use. WWU does not warrant the documents against deficiencies of any kind.



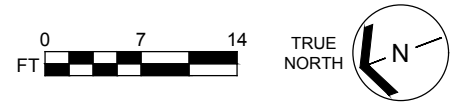
<p>NASH HALL FLOOR 2</p>	<p>Last Sync With AIM: 02/09/2017</p>
<p>Last Drawing Revision: 02/27/2017</p>	

<p>Building NA</p>
<p>Floor # 02</p>



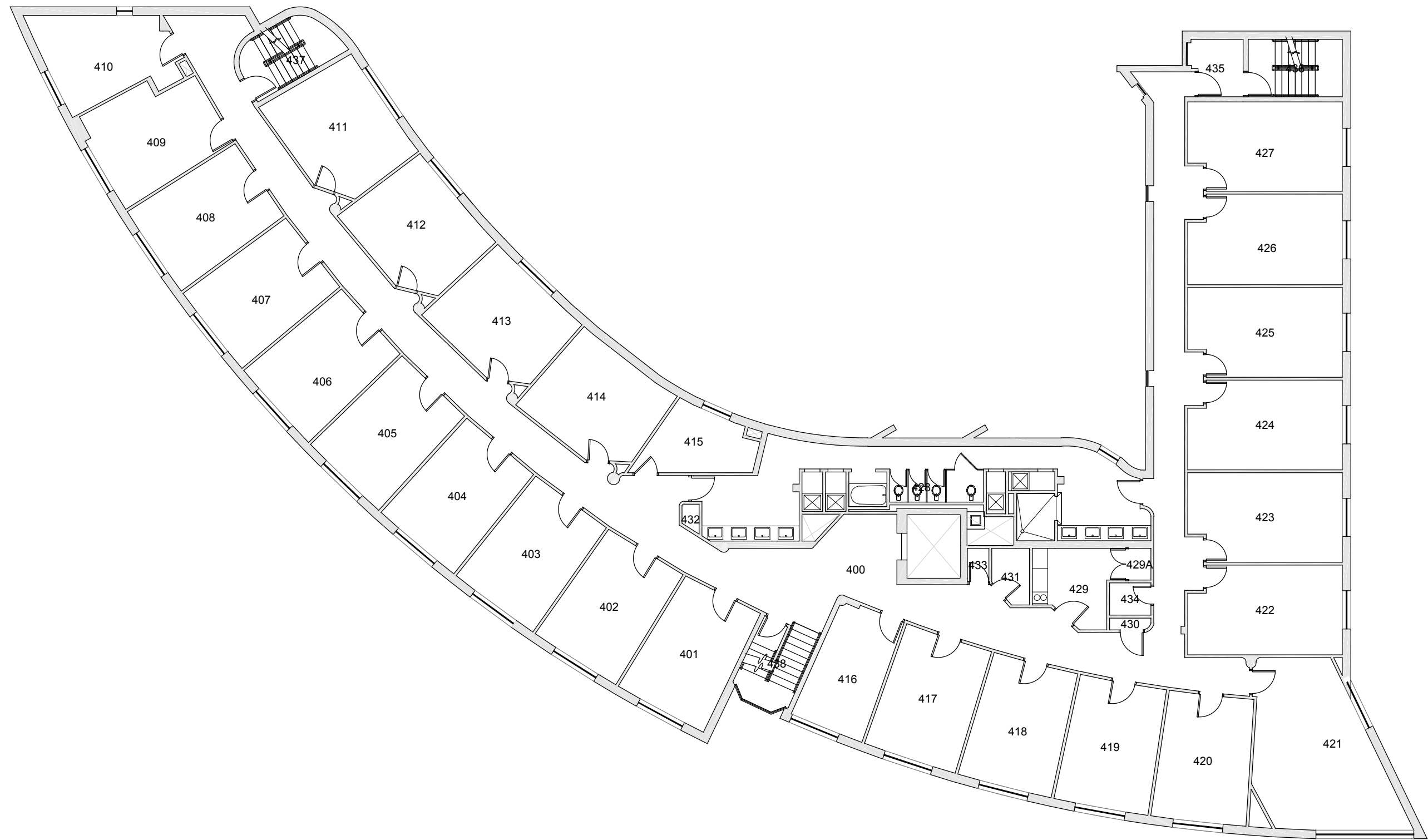
BASE FLOOR PLAN

Western Washington University (WWU) makes these documents available on an "as is" basis. All warranties and representations of any kind with regard to said documents are disclaimed, including the implied warranties of merchantability and fitness for a particular use. WWU does not warrant the documents against deficiencies of any kind.



NASH HALL	
FLOOR 3	
Last Drawing Revision: 02/27/2017	Last Sync With AIM: 02/09/2017

Building	NA
Floor #	03



BASE FLOOR PLAN

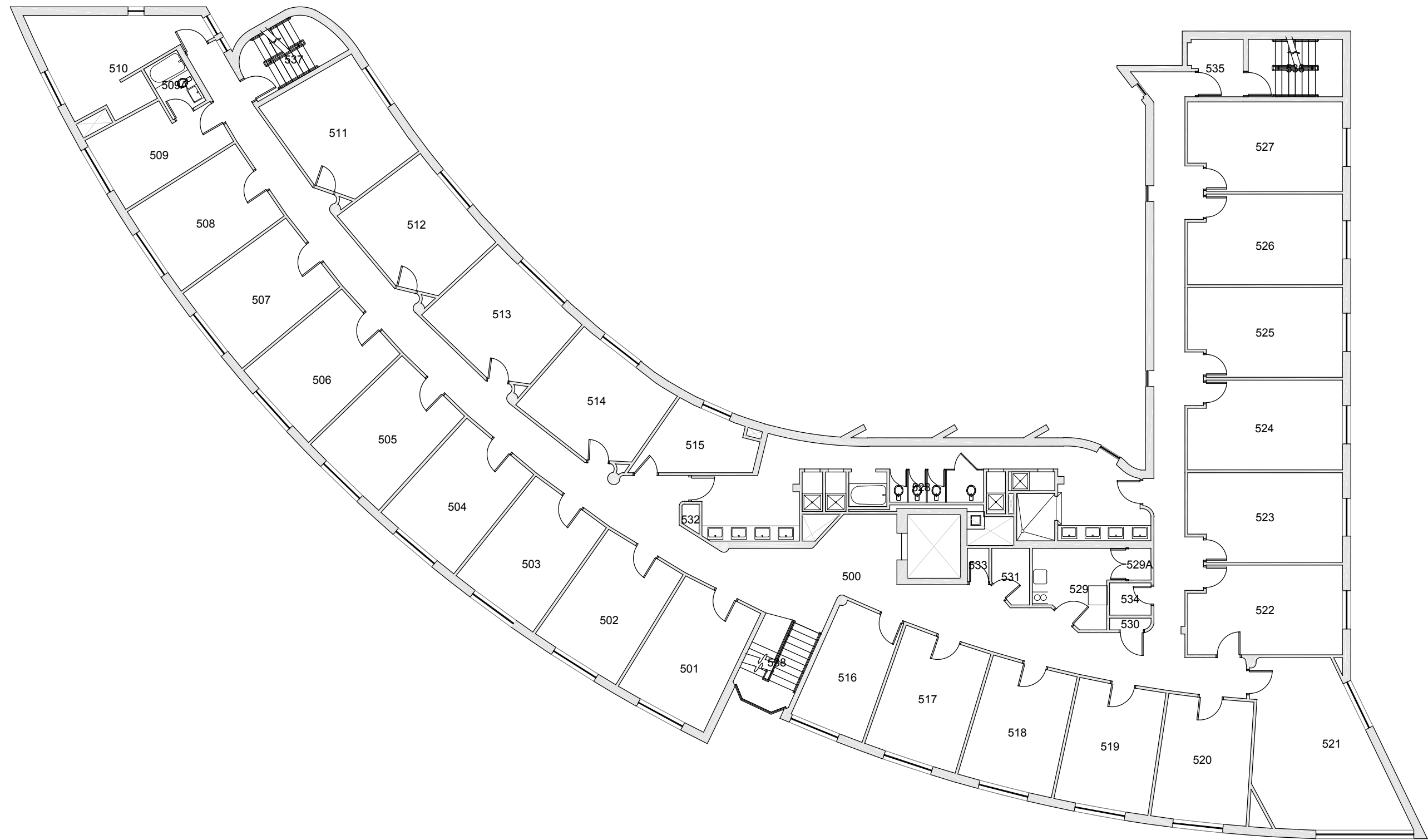
Western Washington University (WWU) makes these documents available on an "as is" basis. All warranties and representations of any kind with regard to said documents are disclaimed, including the implied warranties of merchantability and fitness for a particular use. WWU does not warrant the documents against deficiencies of any kind.



NASH HALL
FLOOR 4

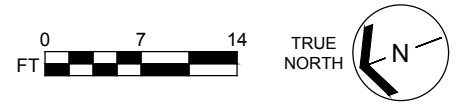
Last Drawing Revision: 02/27/2017 Last Sync With AIM: 02/09/2017

Building	NA
Floor #	04



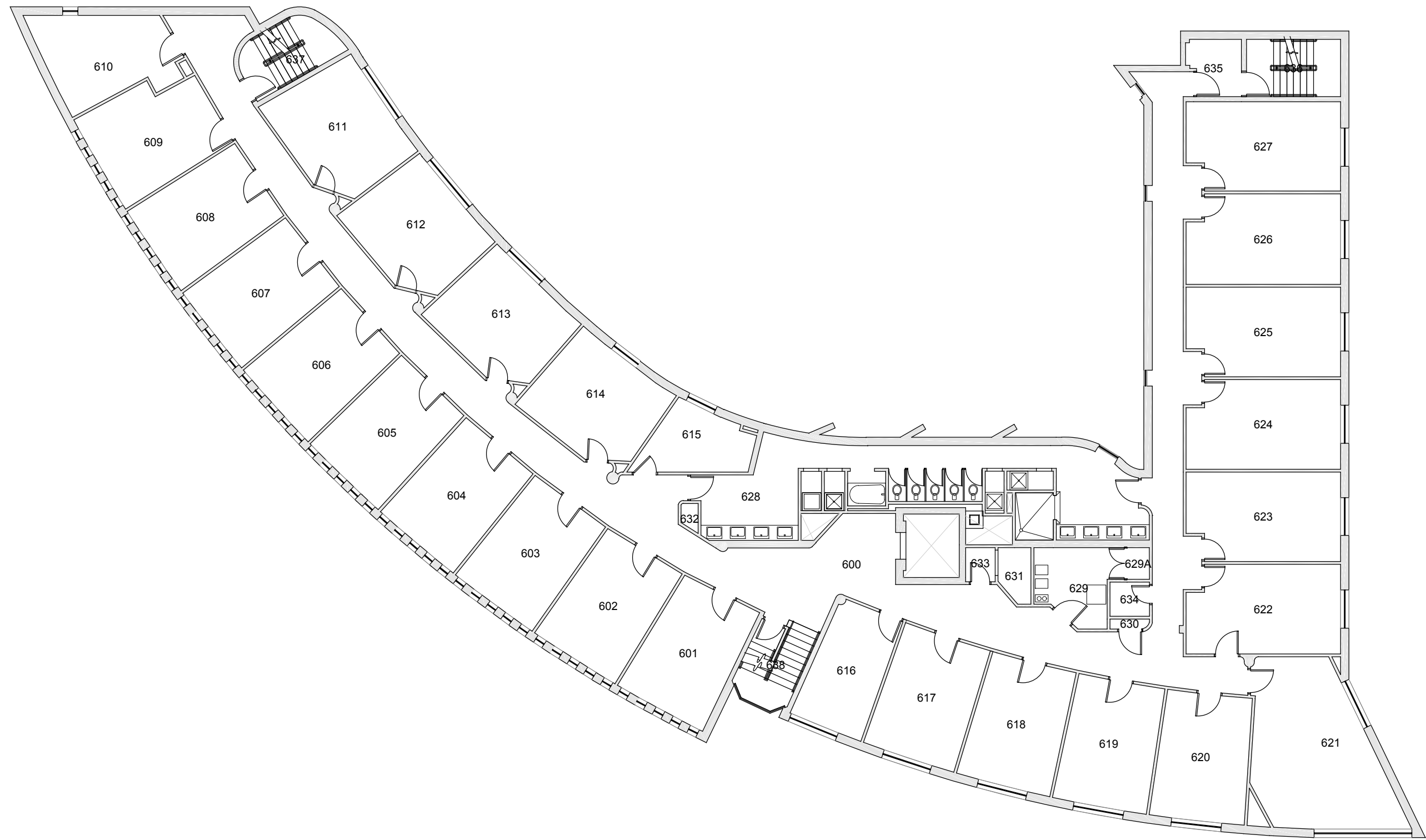
BASE FLOOR PLAN

Western Washington University (WWU) makes these documents available on an "as is" basis. All warranties and representations of any kind with regard to said documents are disclaimed, including the implied warranties of merchantability and fitness for a particular use. WWU does not warrant the documents against deficiencies of any kind.



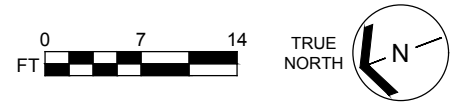
NASH HALL FLOOR 5	
Last Drawing Revision: 02/27/2017	Last Sync With AIM: 02/09/2017

Building NA
Floor # 05



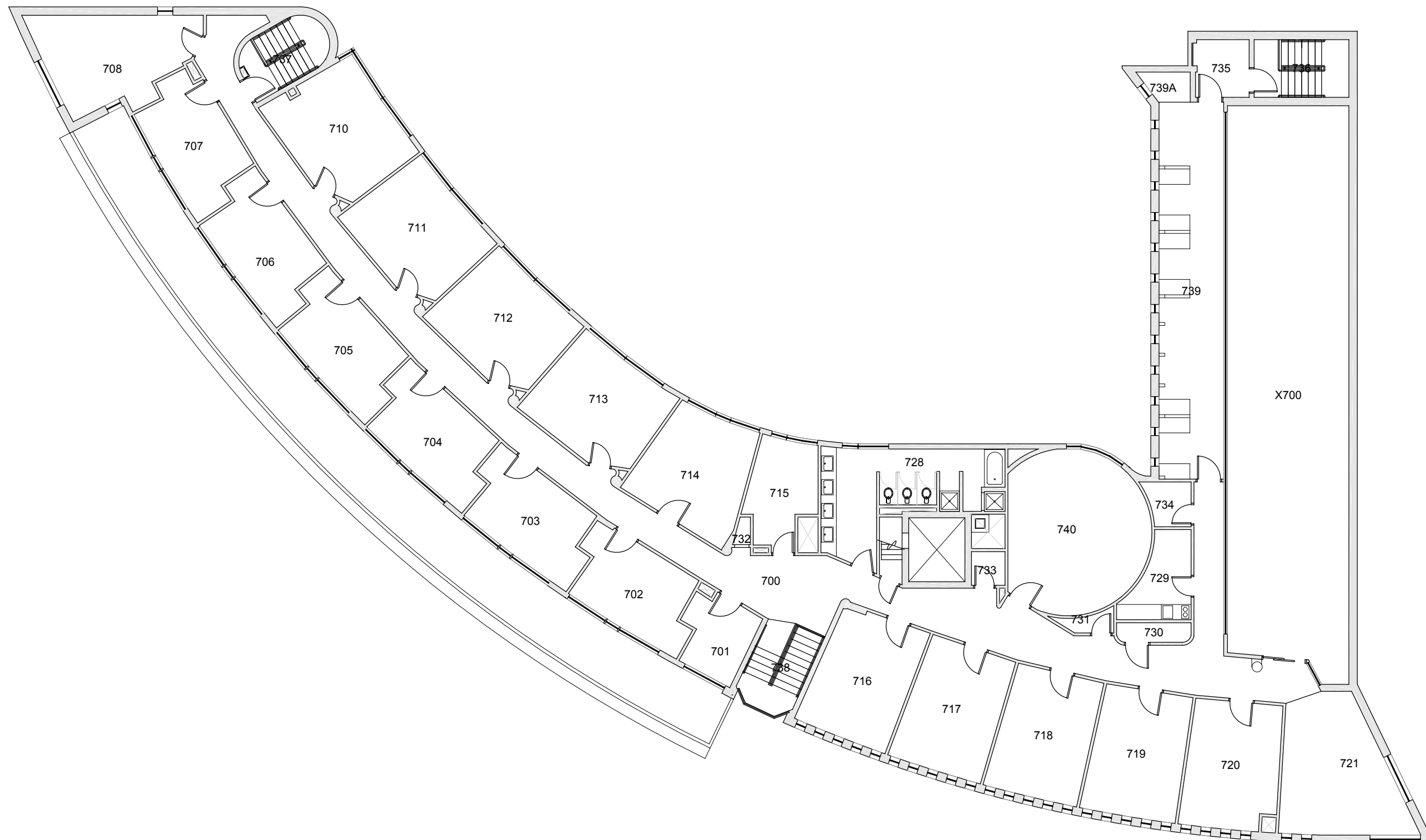
BASE FLOOR PLAN

Western Washington University (WWU) makes these documents available on an "as is" basis. All warranties and representations of any kind with regard to said documents are disclaimed, including the implied warranties of merchantability and fitness for a particular use. WWU does not warrant the documents against deficiencies of any kind.



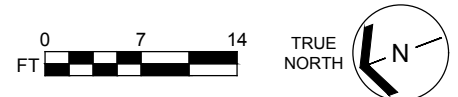
NASH HALL FLOOR 6		Last Sync With AIM: 02/09/2017
Last Drawing Revision: 02/27/2017		

Building NA
Floor # 06



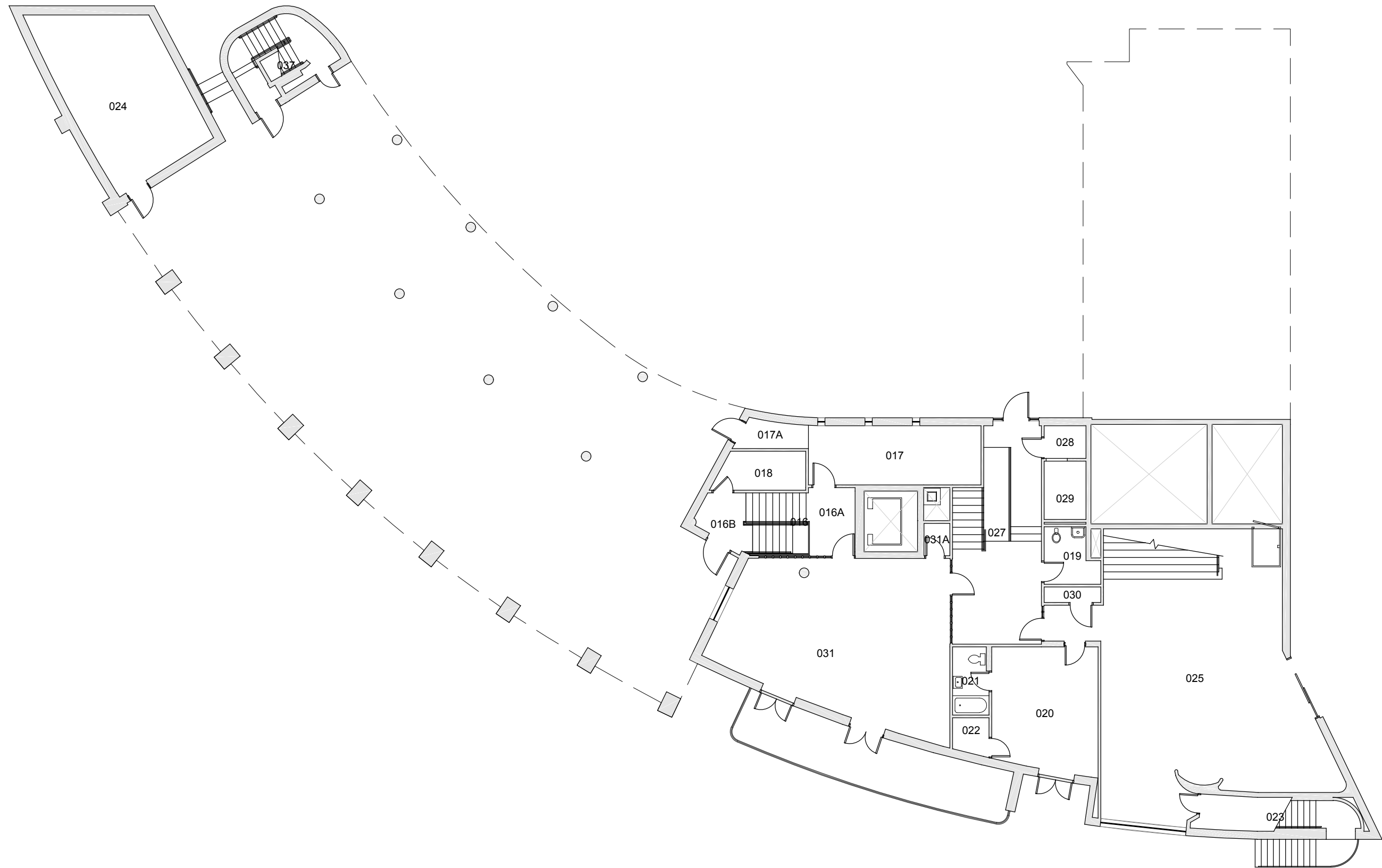
BASE FLOOR PLAN

Western Washington University (WWU) makes these documents available on an "as is" basis. All warranties and representations of any kind with regard to said documents are disclaimed, including the implied warranties of merchantability and fitness for a particular use. WWU does not warrant the documents against deficiencies of any kind.



NASH HALL	
FLOOR 7	
Last Drawing Revision: 02/27/2017	Last Sync With AIM: 02/09/2017

Building	NA
Floor #	07



BASE FLOOR PLAN

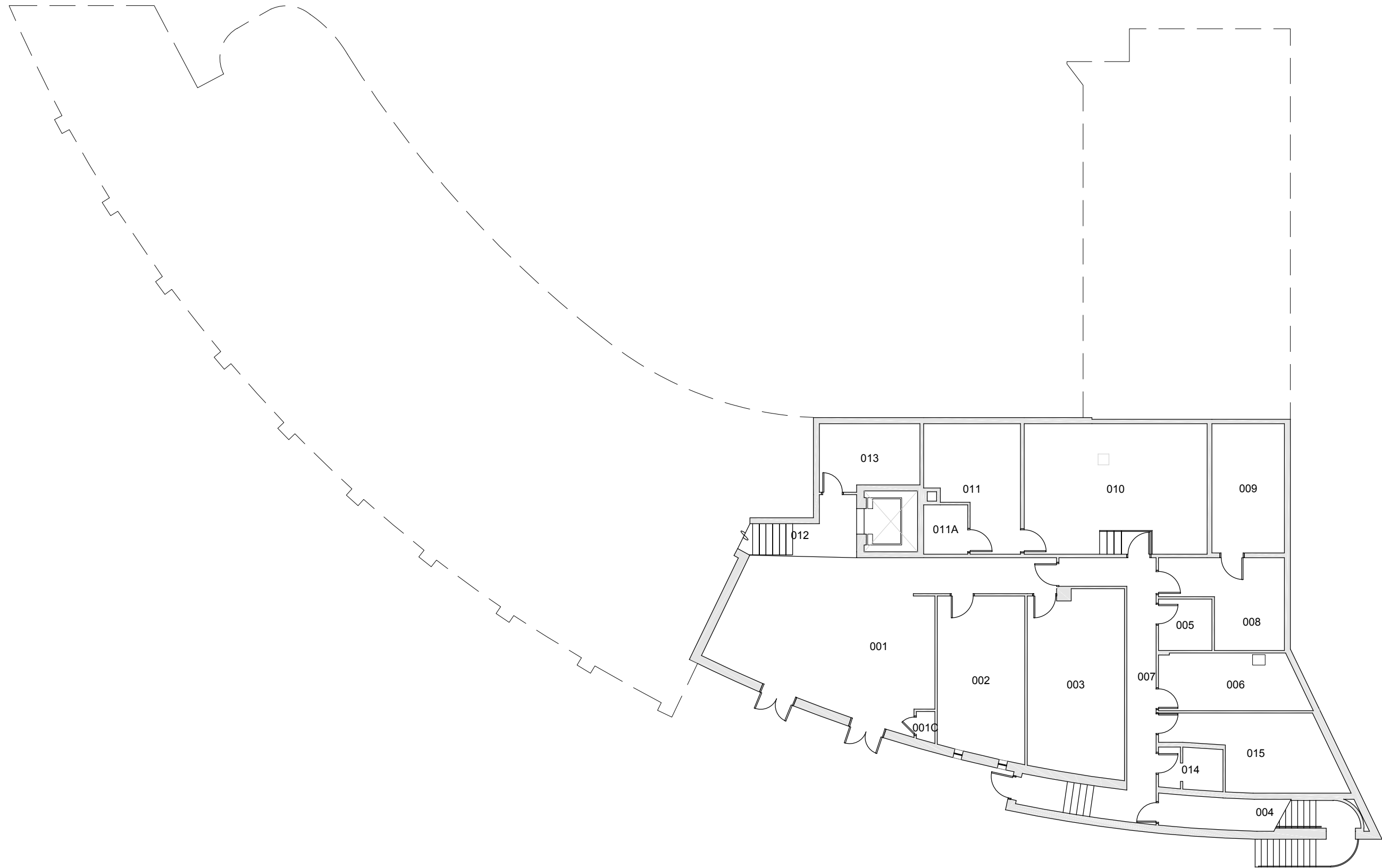
Western Washington University (WWU) makes these documents available on an "as is" basis. All warranties and representations of any kind with regard to said documents are disclaimed, including the implied warranties of merchantability and fitness for a particular use. WWU does not warrant the documents against deficiencies of any kind.



NASH HALL
BASEMENT

Last Drawing Revision: 05/23/2017 Last Sync With AIM: 02/09/2017

Building	NA
Floor #	B



BASE FLOOR PLAN

Western Washington University (WWU) makes these documents available on an "as is" basis. All warranties and representations of any kind with regard to said documents are disclaimed, including the implied warranties of merchantability and fitness for a particular use. WWU does not warrant the documents against deficiencies of any kind.



NASH HALL SUB-BASEMENT		Last Sync With AIM: 02/09/2017
Last Drawing Revision: 02/27/2017		

Building NA
Floor # B2