

BASE FLOOR PLAN

Western Washington University (WWU) makes these documents available on an "as is" basis. All warranties and representations of any kind with regard to said documents are disclaimed, including the implied warranties of merchantability and fitness for a particular use. WWU does not warrant the documents against deficiencies of any kind.



TRUE NORTH

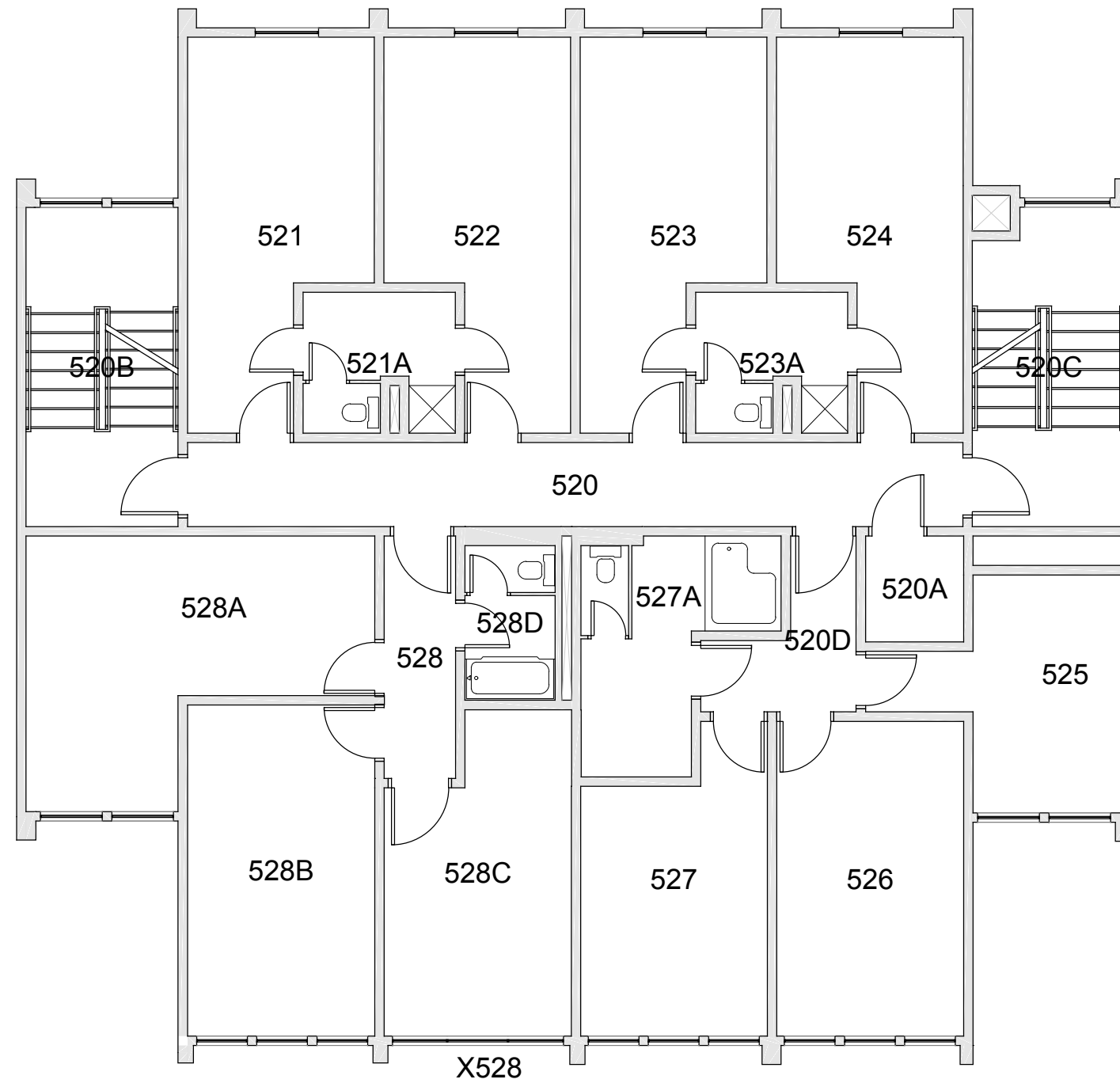


Last Drawing Revision: 02/15/2017

FAIRHAVEN TOWER 5
FLOOR 1

Last Sync With AIM: 02/09/2017

Building
FX05
Floor #
01



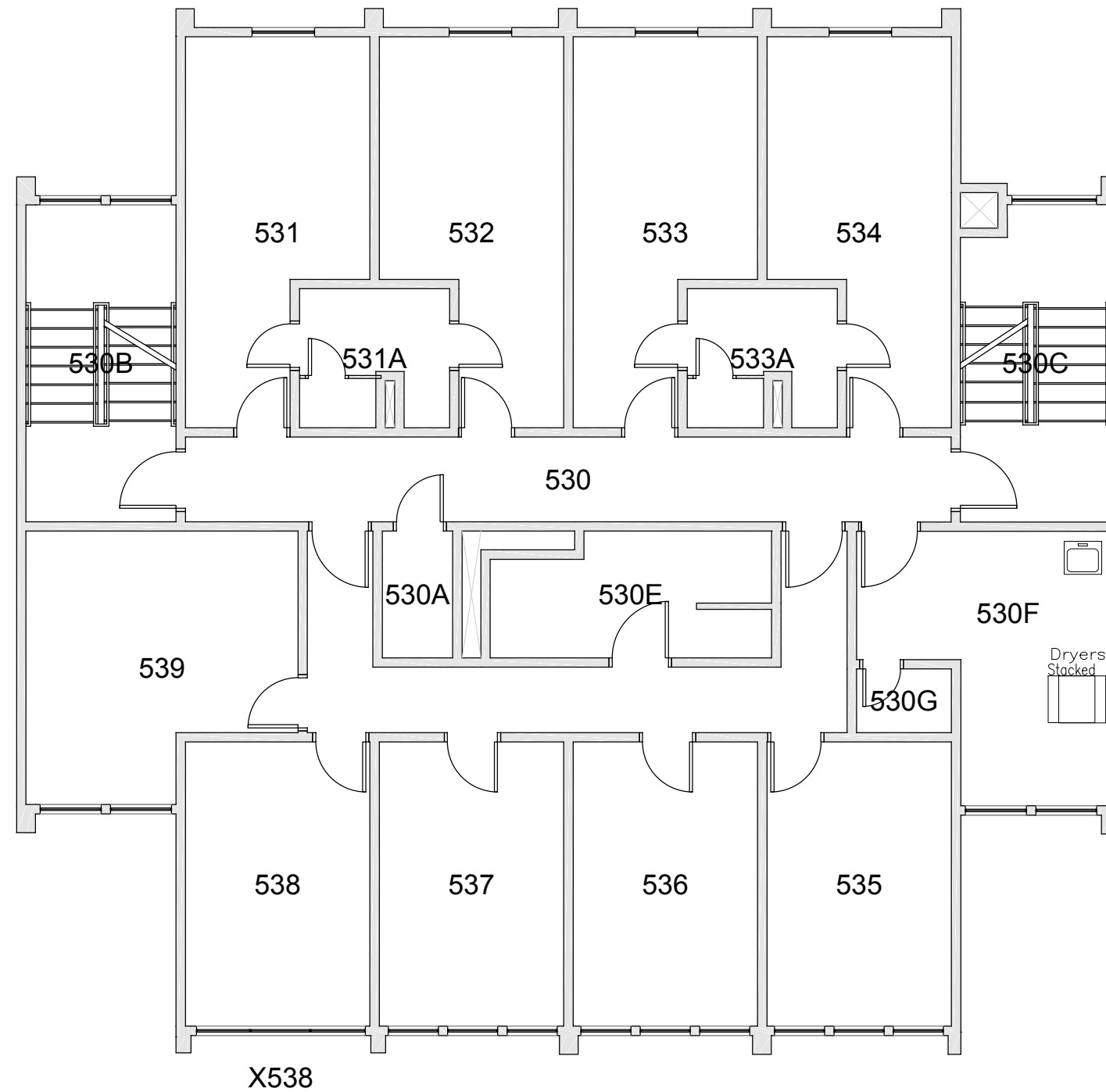
BASE FLOOR PLAN

Western Washington University (WWU) makes these documents available on an "as is" basis. All warranties and representations of any kind with regard to said documents are disclaimed, including the implied warranties of merchantability and fitness for a particular use. WWU does not warrant the documents against deficiencies of any kind.



<p>FAIRHAVEN TOWER 5 FLOOR 2</p>	<p>Last Drawing Revision: 02/15/2017</p>	<p>Last Sync With AIM: 02/09/2017</p>
---	--	---------------------------------------

<p>Building FX05</p>
<p>Floor # 02</p>



BASE FLOOR PLAN

Western Washington University (WWU) makes these documents available on an "as is" basis. All warranties and representations of any kind with regard to said documents are disclaimed, including the implied warranties of merchantability and fitness for a particular use. WWU does not warrant the documents against deficiencies of any kind.

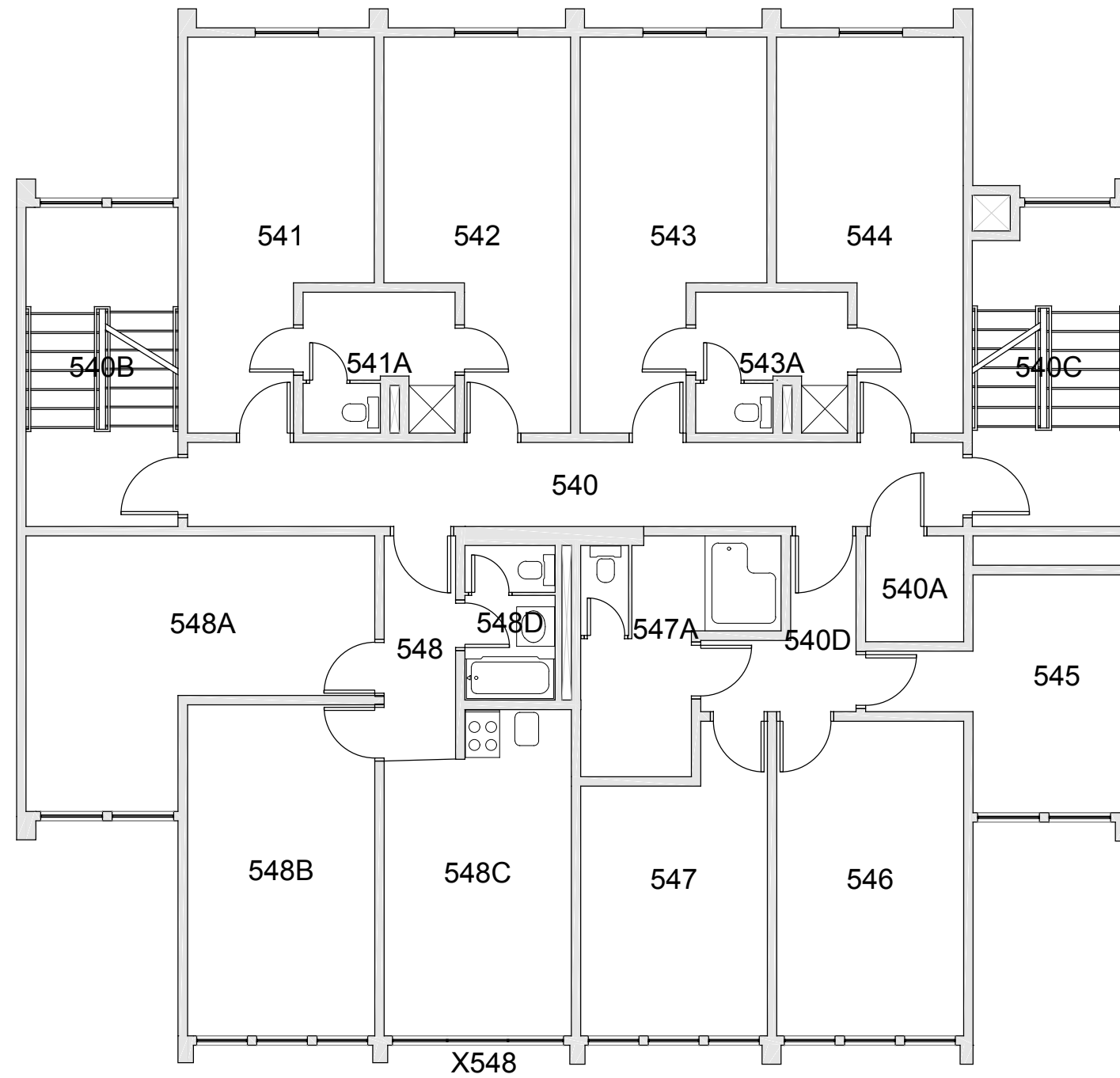


Last Drawing Revision: 02/15/2017

FAIRHAVEN TOWER 5
FLOOR 3

Last Sync With AIM: 02/09/2017

Building
FX05
Floor #
03



BASE FLOOR PLAN

Western Washington University (WWU) makes these documents available on an "as is" basis. All warranties and representations of any kind with regard to said documents are disclaimed, including the implied warranties of merchantability and fitness for a particular use. WWU does not warrant the documents against deficiencies of any kind.



FAIRHAVEN TOWER 5
FLOOR 4

Last Drawing Revision: 02/15/2017 Last Sync With AIM: 02/09/2017

Building **FX05**
Floor # **04**